

# Lebanon Without Borders And Global Gibran

A Lecture by Glen Kalem

## Global Gibran – The Prophet and its Readership

Q : What do Elvis Presley, Carlos Slim Helu and Guantanamo Bay prisons have in common?

A : They all read and admired the work of Khalil Gibran.  
Unearthing Global Gibran : his influence and legacy

## Lebanon Without Borders

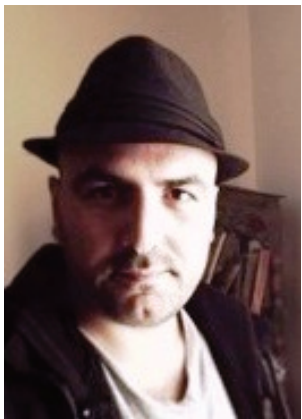
10452 km<sup>2</sup> may be the geographical size of Lebanon but the lebanese people's borders extend beyond.

Glen wants to visually document the biggest Lebanese family

« cedar » tree in history

Mapping the incredible footprint of the Lebanese worldwide via web and film.

Friday, May 16th, 2014 from 12 :00 to 1 :00 at Jamil Iskandar- Byblos Campus



Glen Kalem, international Khalil Gibran researcher and historian,

has spent the last 16 years unearthing the Global Gibran,

his influence and legacy. While most scholars focused on the numbers and figures of Gibran's readership,

Mr. Kalem asked the question that everybody else forgot to; who are they?